



Yfa Masi

TARIFFS FOR MARCH 2015 – FEB 2017:

1. **HIRE OF CHAPEL & VENUE (80 TO 180 PEOPLE)**
 - All prices includes: tables (180 on round tables), 150 conference chairs & 40 wooden chairs
 - Marquee Tent or Restaurant (max 110 people in restaurant).
 - Use of braai area at restaurant for Friday @ R 950 (extra)
 - Venue hire up to 24h30, an additional fee is payable for every hour after 24h30



1. 1. **With 2 Luxury Chalets:**

Fridays & Saturdays: R 20 500 (Deposit R 7000)

- 2 x 3 Bedroom Chalets included for Friday & Saturday (12 beds)
- Honeymoon suite include for honeymoon evening (Choose from Moholoholo Forest Camp or Moholoholo Ya Mati – B & B)

Mondays to Thursdays: R 13 200 (Deposit R 5200)

- 1 x 3 Bedroom Chalet included for 2 evenings or 2 x 3 Bedroom Chalets included for 1 evening
- Honeymoon suite include for honeymoon evening (Choose from Moholoholo Forest Camp or Moholoholo Ya Mati – B & B)



1. 2. **Without Chalets:**

Fridays & Saturdays: R 14 650 (Deposit R 6000)

- Honeymoon suite include for honeymoon evening (Choose from Moholoholo Forest Camp or Moholoholo Ya Mati – B & B)

Mondays to Thursdays: R 11 100 (Deposit R 5000)

- Honeymoon suite include for honeymoon evening (Choose from Moholoholo Forest Camp or Moholoholo Ya Mati – B & B)



1. 3. Deposit must be paid within 2 weeks to confirm a date. If we do not receive the deposit within the 2 week period the date will be open for other bookings

2. **HIRE OF CHAPEL & VENUE (80 AND LESS) If less than 30 people please contact us for special quote**

- All prices include: tables & chairs.
- Includes marquee tent or restaurant.
- Use of braai area at restaurant of Friday @ R750 (extra)
- Venue hire up to 24h30, an additional fee is payable for every hour after 24h30

2. 1. **With Luxury Chalets:**

Fridays & Saturdays: R 19 500 (Deposit R 6200)

- 2 Chalets included for Friday & Saturday.
- Honeymoon suite include for honeymoon evening (Choose from Moholoholo Forest Camp or Moholoholo Ya Mati – B & B)

Mondays to Thursdays: R 11 500 (Deposit R 4500)

- 1 Chalet included for 2 evenings or 2 Chalets included for 1 evening
- Honeymoon suite include for honeymoon evening (Choose from Moholoholo Forest Camp or Moholoholo Ya Mati – B & B)

2. 2. **Without Chalets:**

Fridays & Saturdays: R 13 150 (Deposit R 5000)

- Honeymoon suite include for honeymoon evening (Choose from Moholoholo Forest Camp or Moholoholo Ya Mati – B & B)

Mondays to Thursdays: R 9 900 (Deposit R 4000)

- Honeymoon suite include for honeymoon evening (Choose from Moholoholo Forest Camp or Moholoholo Ya Mati – B & B)

2. 3. Deposit must be paid within 2 weeks to confirm a date. If we do not receive the deposit within the 2 week period the date will be open for other bookings

3. **HIRE OF CHAPEL**

3. 1. **Tariffs:**

Fridays & Saturdays: R 3000 (not in peek season – please phone for more info) including Sundays

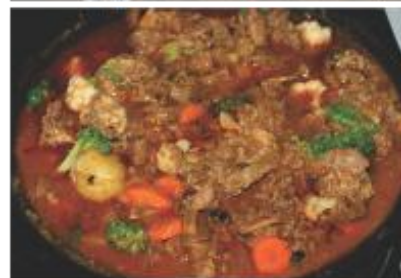
Mondays to Thursdays: R 1500

3. 2. 50% Deposit must be paid within 2 weeks to confirm a date. If we do not receive the deposit within the 2 week period the date will be open for other bookings

4. Prices include cleaning of venue before and after function.



5. Price includes the candles in chapel.
6. Bride must provide kneeling cushion.
7. Full payment must be received 21 days before wedding.
8. **Cancellation:**
In case of a cancellation you will lose the full deposit.
9. White chair covers @ R16-00.
10. EXTRAS:
Draping of tent / restaurant can be done by Moholoholo
 - Draping of tent poles @ R1700
 - Draping of the roof of tent @ R 2500
 Fairy lights @ R 700
 Chandelier fairy lights @ R 700
 Chinese lanterns with globes @ R 700
 Single Chinese lanterns without globes @ R 10 each
 Consol lights with Sheppard's Hook @ R 15
 Under plates:
 - Silver @ R 10
 - Gold @ R 10
 - Dark wooden @ R 10
 - Copper @ R 10
 Red Carpet @ R 500
 Choc fountain (2 x 1kg fountains)
 - 1 fountain with 1 kg @ R 350
 - 2 x fountains with 1 kg chocolate @ R 650
 Extra Belgium chocolate @ R 250 per kg
11. Use of Moholoholo Game Drive vehicle:
 - On the premises @ R 500
 - If we have to pick the bride up @ R 700
12. Eagle from Moholoholo Wildlife Rehabilitation Centre with welcoming drinks and photos @ R 800
 Cheetahs from Moholoholo Wildlife Rehabilitation Centre with welcoming drinks and photos @ R 2 100
 - Welcoming drinks not included
 - If available
 Photos at the Rehab Centre @ R 500 per hour
13. 1. Menus includes: Setting of tables, all cutlery, glasses & crockery, tablecloths & serviettes (white) & ice water.
 - Ya Mati is responsible for the catering, no food from outside will be allowed
 - If we need to work out a special menu there will be additional costs per person
 2. R 2000 Deposit must be paid for tablecloths and breakages and will be refunded after the wedding if we do not have any damaged.
 3. Waitresses must be hires at an additional cost (minimum of 7 hours)



14. 1. Welcoming drinks:
- Sherry @ R 8 per glass
 - Breezers @ R 14 each (served in champagne glasses with sugar rims)
 - 1 ½ L Fruit Juice @ R 45
 - Vodka Slush Puppies @ +/- R 30
 - Plain Slush Puppies @ +/- R 20
 - Cocktails @ +/- R 30 per glass
 - No outside welcoming drinks will be allowed, if you want something that is not on our list we will give you a quote.

Welcome snacks:

- Small paper bags popcorn @ +/- R 5
- Ask the office for our updated snack list

15. 1. Bar:
- Corkage fee of R 40 per wine & champagne bottle.
 - The bar and venue closes at 24h30 every hour after that you will have to pay R 900 extra per hour
2. Ya Mati can provide you with fire wood at additional cost.
- 1 Load @ R 500
 - ½ Load @ R 300

16. 1. Wedding cake:
- Ya Mati can bake your wedding cake. All we need is a picture of your cake and we will give you a free quote

17. 3. Hire of venue does not include the following:
- Flowers
 - Candle on tables
 - Music
 - Serviette rings
 - Menus and names on tables.

17. Public holidays & long weekend and Sundays tariffs are the same as Saturdays. On a long weekend where there is 2 days extra to the weekend then whole of Ya Mati must be booked for 3 nights (Easter weekend) If you have any questions please ask our office.

18. Contact person:
Marisa Reinach
084 511 3000 / E-pos: marisa@moholoholo.co.za

19. Banking Details:
Moholoholo Ya Mati
Standard Bank
Menlyn: 01 2345
Acc nr: 012 184 438
Reference: wedding and date
Please fax proof of payment to 012 – 348 4926 or 086 513 1096

